

De-airing tanks

GENERAL DESCRIPTION

Used in conjunction with a vacuum source and related accessories, this item provides a very efficient and therefore quick means of removing the air from water to fill Triaxial cells, Bladder air/water pressure cylinders and Volume change measurement apparatus. The de-airing tank consists of a Perspex cylinder fit with a water spray inlet, an air outlet and a water outlet. A suitable vacuum supply is connected to the air outlet and water is sucked into the cylinder in a fine spray via the water inlet. The vacuum draws the air out of the water. The complete de-airing system should include:

- Vacuum pump (eg. Our model 86-D2001)
- Air drying unit filled with desiccant salt (eg. Our model 86-D2005 filled with 86-D0819=accessories of Vacuum pump)
- Rubber connection tubes (eg. Two 86-D2064=accessories of vacuum pump)
- Valve panel (eg. Our model 28-WF4225)

For more information see accessories and the relevant picture of the "De-aired water system General layout".

The above accessories are not needed when using the 28-WF4202 De-airing water apparatus which incorporate a vacuum pump /compressor, water trap and valves.

The tanks are supplied complete with a metal stand and have to be fit at a high level to fill the system by gravity.

Two models available: 28-WF4220/A; 7 litres capacity and 28-WF4221/A 23 litres capacity.

- Overall dimensions
28-WF4220/A: 579x200x209 mm
28-WF4221/A: 619x320x311 mm
- Weight approx.
28-WF4220/A: 6.4 kg
28-WF4221/A: 12 kg

ORDERING INFO

28-WF4220/A

De-airing tank, 7 litres capacity

28-WF4221/A

De-airing tank, 23 litres capacity

ACCESSORIES

Vacuum pumps

28-WF4225

Valve panel for De-airing tanks

For connection to the vacuum pump and de-airing tank. Includes water tap connection and two de-aired water outlets.

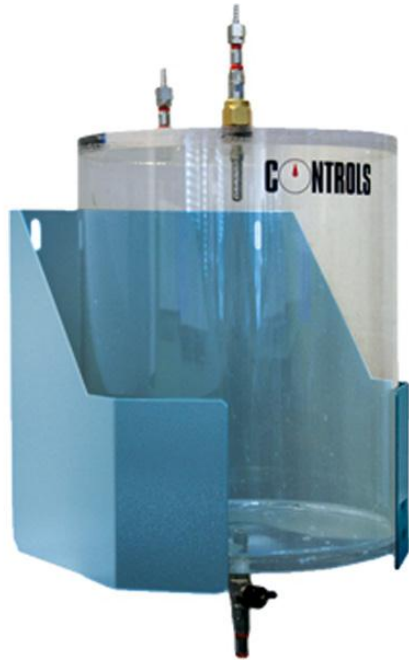
- Dimensions: 510x200x30 mm
- Weight approx.: 3kg

86-D2005

Air drying unit for use with silica gel with the indicator 86-D0819

86-D0819

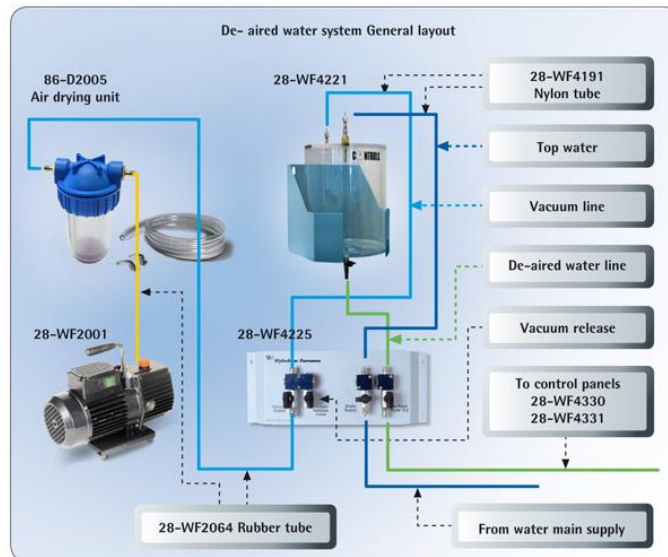
Silica gel 1 kg



28-WF4221_A



28-WF4225



De-aired water system general layout

